



---

# CELL SHUT OFF IMPROVEMENT

SMOOTH PRODUCTION  
PROCESS

---

- ✓ SELECTIVE CELL SWITCH OFF DURING CURRENT PRODUCTION RUN
- ✓ LESS UNPLANNED DOWNTIME
- ✓ LESS WASTE
- ✓ IMPROVED EFFICIENCY

# WHAT IS NEW?

## Easy cell switch-off for smooth production

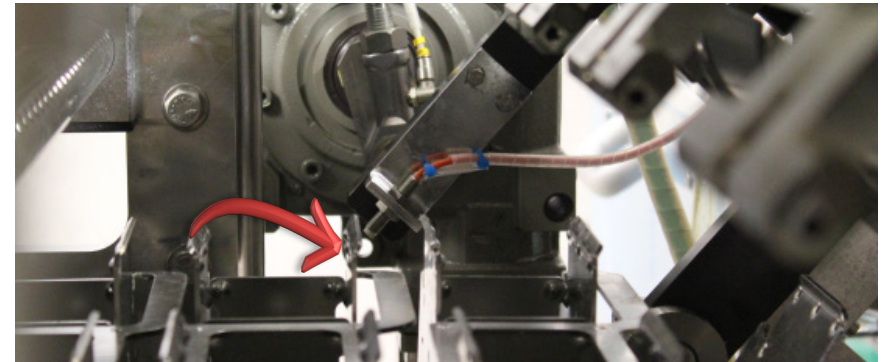
Unplanned downtime has a significant impact on the efficiency of a filling line. With the new cell switch off kit, these production stoppages can now be easily prevented.

With the new upgrade, SIG Combibloc offers a software package that enables the straightforward and efficient conversion of the filling machine.

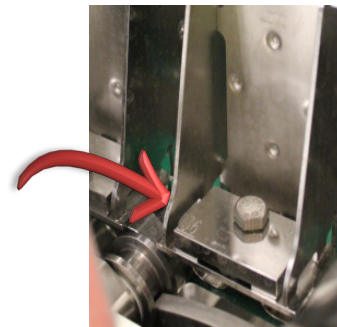
In addition to the software, the package includes a conversion kit for the cell chain: an initiator for 0-point determination ensure that individual cells in the current production run can be switched off. In the event of a defective cell causing a malfunction during the production process, with the new software this no longer automatically results in the shutdown of the entire machine, with the defective products and lost output that entails.

The relevant cells can be quickly and easily selected and switched off via the HMI operator panel. After that, no new sleeves will be shaped and filled in those cells. Production can continue with no downtime, and the necessary repairs are carried out later. This has a significant impact on the OEE.

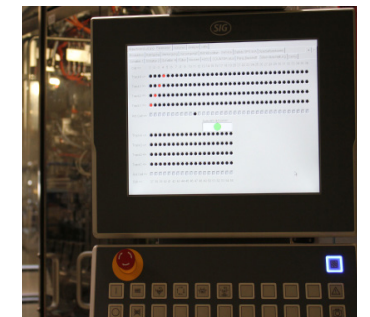
The complete upgrade package consists of the software and the initiator. For small- and medium-format machines, it may be necessary to replace the central processing unit.



Initiator for determining the 0-point.



Consecutively numbered plates in the cells: this means the affected cell can be identified and individually shut off



Easy operation via the HMI operator panel

HOW IS IT REALISED?

THE MODIFICATION KIT CAN BE INSTALLED WITHIN 4 HOURS.

FOR FURTHER QUESTIONS PLEASE CONTACT YOUR LOCAL SERVICE CONTACT PERSON.